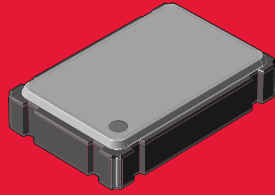


RXD 803 SERIES



FEATURES

- 3.3 or 5.0V version
- Miniature profile
- Low power consumption
- Standby function
- Tape & Reel (1,000 pcs)
- Seam welded package with metal lid also available

SMD CLOCK OSCILLATOR

The 803X and 803R Series are miniature, crystal controlled, low current clock oscillator in a ceramic SMD package. The low profile package is ideal for today's advanced portable PC and instrumentation designs.

PART NUMBERING GUIDE "EXAMPLE"

PART NUMBER	FREQUENCY (50.0 MHz)
803XR	50.000

Sample Part Number: 803XR-50.000MHz

OPERATING CONDITIONS/ELECTRICAL CHARACTERISTICS

PARAMETERS	CONDITIONS	803X			803R			UNITS
		MIN	TYP	MAX	MIN	TYP	MAX	
FREQUENCY RANGE		1.800		80.000	1.800		80.000	MHz
TEMPERATURE RANGE	Operating	0		+70	0		+70	°C
	Storage	-55		+125	-55		+125	°C
SUPPLY VOLTAGE		+4.5	+5.0	+5.5	+2.7	+3.3/5.0	+5.5	V DC
FREQUENCY STABILITY**	Standard	-100	±40	+100	-100	±40	+100	PPM
	803Y	-50		+50				PPM
INPUT CURRENT	1.8 ~ 30.0 MHz			10			8	mA
	30.0 ~ 35.0 MHz			15			8	mA
	35.0 ~ 50.0 MHz			30			12	mA
	50.0 ~ 66.0 MHz			30			15	mA
	66.0 ~ 80.0 MHz			50			30	mA
OUTPUT SYMMETRY	@ 1/2 Vcc Level	40/60	50 ±4	60/40	40/60	50 ±4	60/40	%
RISE AND FALL TIMES				10			15	ns
LOGIC "0" LEVEL	Vcc x 0.1V max.							
LOGIC "1" LEVEL	Vcc x 0.9V min.							
LOAD	HCMOS			50			15	pF
START-UP TIME	1.8 ~ 36.0 MHz			5			5	ms
	36.0 ~ 80.0 MHz			10			10	ms
OUTPUT CURRENT (IOL)	VOL=0.5V/0.33			4			4	mA
	VOH=4.5V/2.97V			-4			-4	mA
STANDBY CURRENT	Vcc x 0.1V max.			15			10	µA
ENABLE/DISABLE TIME				100			100	ns

** Inclusive of 25°C tolerance, operating temperature range, input voltage change, load change, aging shock and vibration.

*** An internal pullup resistor from pin 1 to 4 allows active output if pin 1 is left open.

Note: A 0.01 µF bypass capacitor should be placed between VCC (Pin 4) and GND (Pin 2) to minimize power line noise.

PACKAGE DIMENSIONS (mm)

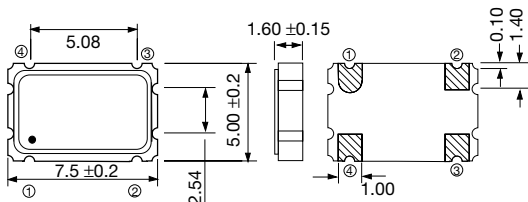


Figure 1) 803 Top, Side and Bottom views

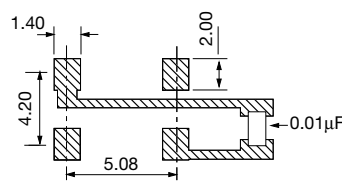


Figure 2) Land Pattern

PIN CONNECTIONS

#1	Standby
#2	GND
#3	OUTPUT
#4	Vcc

803X/803R Standby Control Voltage

PIN #1 = OPEN ***	#3 = OSCILLATION
PIN #1 = Vccx0.9 MIN	#3 = OSCILLATION
PIN #1 = Vccx0.1 MAX	#3 = HIGH IMPEDANCE